

**3DHISTECH**

THE DIGITAL PATHOLOGY COMPANY

TRANSITION TO DIGITAL PATHOLOGY

# Pannoramic 1000

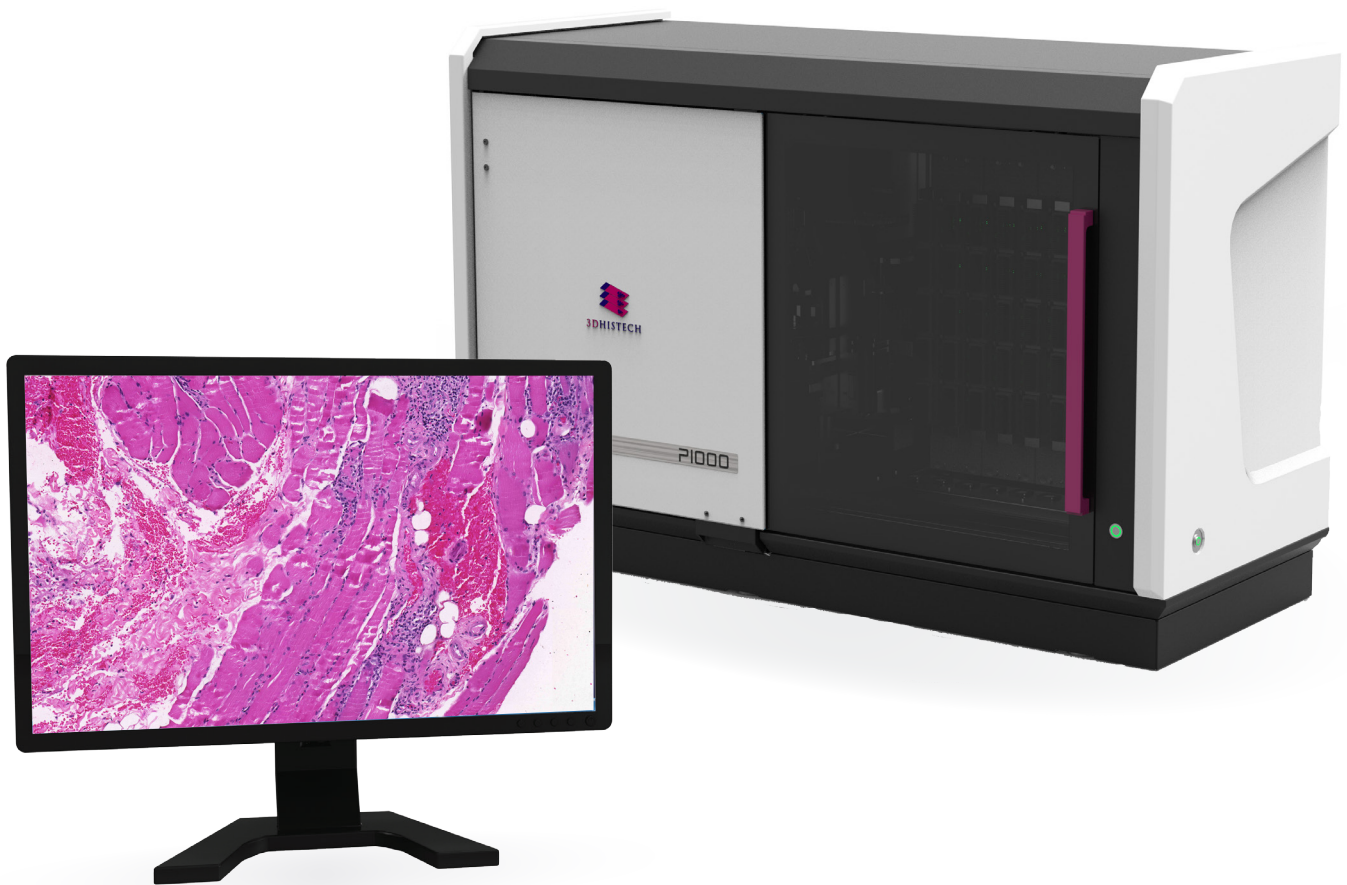
**Introducing the fastest whole slide scanner in the market, the ultimate solution for large-volume whole-slide scanning**



*Unprecedented capacity  
High throughput  
Flexibility*

In large pathology laboratories, the sheer volume of cases require reliable and automated high-throughput slide scanning solutions while maintaining flexibility.

**Pannoramic 1000, the newest member of 3DHISTECH's Pannoramic scanners family, is a high-end, extra fast and super-efficient slide digitalization system. Its unprecedented 1000-slide capacity, its unparalleled throughput at 100 slides per hour and its robust design offers a reliable solution for high-volume whole-slide imaging.**



**Thanks to its unprecedented capacity and unparalleled speed, Pannoramic 1000 offers automated, “walk away” slide scanning for a whole day’s scanning needs, speeding up the workflow and freeing up valuable lab resources for other important tasks.**

# Key Features

## ▶ Highest capacity

- Largest capacity whole slide scanner on the market: 1000 slides
- Fully automatic loading and scanning

## ▶ Shortest scanning time

- Fastest whole slide scanner on the market: 100 slides per hour, 2000 slides per day (40x resolution, 15 x 15 mm, 0.25 µm/pixel, single layer)

## ▶ Innovative hardware design

- Antivibration granite base for maximum stability and image quality
- Dual slide stage
- Robust construction for heavy duty use
- Easy-maintenance robotized loading

## ▶ Most efficient slide logistics

- Double width slide (mega slide) support
- Mixed (single and double width) batch scanning
- Emergency magazine handling
- Magazine panels supporting slide magazines from a range of stainer devices (up to 5 per device) – default magazine is Sakura
- Rapid loading
- Flexible slide processing, scanning in arbitrary order
- Parallel operation: slide loading and preview in parallel with scanning
- Batch preview function
- Temporary scanning profile option

## ▶ High-resolution imaging

- Two separate objectives exchangeable automatically during scanning
- Water immersion (optional – coming soon)
- Oil immersion (optional – coming soon)
- Multilayer (Z-stack) scanning (optional)
- Extended Focus scanning (optional)
- Multiple scanning profiles, auto selection
- 1D and 2D barcode reading and parsing
- Multiple image compression
- Multiple color profile and schemes
- Multiple image compensation
- Automated tissue detection and automated coverslip detection

## ▶ Advanced operational information management with scanning history file

## ▶ New, flexible, touch-ready, easy-to-use software user interface

## ▶ Integrated slide server with optional storage

# Key Characteristics

- ▶ **Slide capacity: 1000 slides**
- ▶ **Supported slides: normal and double width slides**
- ▶ **Number of magazine panels: 5 (with 10 slide magazines each)**
- ▶ **Scanning speed: 30 sec at 40x, 15 x 15 mm**
- ▶ **Image acquisition camera: 12 MP sensor**
- ▶ **Microscope objectives:**
  - Carl Zeiss, NA 0.8, Plan-Apochromat, 0.25 µm/pixel
  - Carl Zeiss, NA 0.95, Plan-Apochromat, 0.12 µm/pixel
  - Carl Zeiss, NA 1.2, Plan-Apochromat, 0.12 µm/pixel
- ▶ **Digital slide format: MRXS with conversion to several other formats**
- ▶ **Scan method: Area scanning with continuous stage movement and flash illumination**
- ▶ **Dimensions (W x D x H in centimeters): 154 x 98 x 90 (base unit only)**
- ▶ **Weight (kg): 200 (base unit only)**

**For research use only.**

Production and  
development by



**3DHISTECH**

**[WWW.3DHISTECH.COM](http://WWW.3DHISTECH.COM)**

**3DHISTECH LTD.**

H-1141 Budapest, Öv u. 3., Hungary

E-mail for general enquiries: [info@3dhistech.com](mailto:info@3dhistech.com)

Phone: +36-1-211-2130

Fax: +36-1-211-2129